

## Test Report

No. SDHL1809020549FB

Date: Sep.12, 2018

Page 2 of 3

### Test Conducted:

NFPA 701 Test Method 1-2015 Edition: Standard Methods of Fire Tests for Flame Propagation of Textiles and Films

### General Information:

Materials:	Fabric	Weight	430 g/m <sup>2</sup>
Conditioning	Dry at (105±3)°C, Duration: 30min		

### Criteria for test method 1 (Chapter 10):

1. Fragments or residues of specimens that fall to the floor of the test chamber shall not continue to burn for more than an average of 2 seconds per specimen for the sample of 10 specimen.
2. The average weight loss of the 10 specimen in a sample shall be 40 percent or less.
3. No individual specimen's percent mass loss shall deviate more than 3 standard deviations from the mean for the 10 specimens.
4. When a retest is required, no individual specimen's percent mass loss in the second set of specimens shall deviate from the mean value by more than 3 standard deviations calculated for the second set.

### Test Results:

Specimen	Original Mass (g)	Post Mass (g)	Residues (seconds)	Mass Loss (percent)
1	26.6	25.0	0.0	6.0
2	26.5	24.8	0.0	6.4
3	26.4	24.7	0.0	6.4
4	26.5	24.6	0.0	7.2
5	26.6	24.7	0.0	7.1
6	26.3	24.7	0.0	6.1
7	26.5	24.8	0.0	6.4
8	26.4	24.3	0.0	8.0
9	26.6	24.5	0.0	7.9
10	26.5	24.4	0.0	7.9
		AVG	0.0	6.9
		3*STDEV	--	2.3
		AVG+3STDEV	--	9.2

**Conclusion: PASS.** The submitted sample complied with the performance requirement of test method 1 of NFPA 701.



Unless otherwise agreed in writing, this document is issued by the Company subject to its General Conditions of Service printed overleaf, available on request or accessible at <http://www.sgs.com/en/Terms-and-Conditions.aspx> and, for electronic format documents, subject to Terms and Conditions for Electronic Documents at <http://www.sgs.com/en/Terms-and-Conditions/Terms-e-Documents.aspx>. Attention is drawn to the limitation of liability, indemnification and jurisdiction issues defined therein. Any holder of this document is advised that information contained hereon reflects the Company's findings at the time of its intervention only and within the limits of Client's instructions, if any. The Company's sole responsibility is to its Client and this document does not exonerate parties to a transaction from exercising all their rights and obligations under the transaction documents. This document cannot be reproduced except in full, without prior written approval of the Company. Any unauthorized alteration, forgery or falsification of the content or appearance of this document is unlawful and offenders may be prosecuted to the fullest extent of the law. Unless otherwise stated the results shown in this test report refer only to the sample(s) tested and such sample(s) are retained for 30 days only.  
 Attention: To check the authenticity of testing / inspection report & certificate, please contact us at telephone: (86-755) 8387 1443, or email: CN.Doccheck@sgs.com  
 19° Building, Carpenter Industrial Park, No. 1, Shunde South Road, Hubei Section, Jiangmen Town, Shunde, Foshan, Guangdong, China 528333 t (86-757)22905688 f (86-757)22905688 www.sgs.com.cn  
 中国·广东·佛山顺德镇大良镇建设办事处五沙路1号欧洲工业园一号楼首层邮编: 528333 t (86-757)22905688 f (86-757)22905688 e sgs.china@sgs.com

Member of the SGS Group (SGS SA)



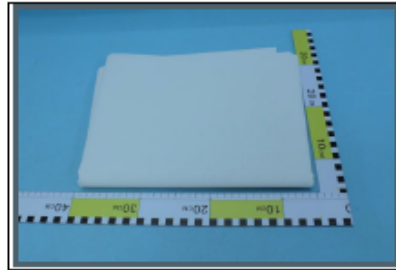
Test Report

No. SDHL1809020549FB

Date: Sep.12, 2018

Page 3 of 3

Photo Appendix:



\*\*\*End of Report\*\*\*



SGS-CSI (Shanghai) Inspection & Testing Services Co., Ltd.  
Shunde Branch Address:

Unless otherwise agreed in writing, this document is issued by the Company subject to its General Conditions of Service printed overleaf, available on request or accessible at <http://www.sgs.com/en/Terms-and-Conditions.aspx> and, for electronic format documents, subject to Terms and Conditions for Electronic Documents at <http://www.sgs.com/en/Terms-and-Conditions/Terms-e-Documents.aspx>. Attention is drawn to the limitation of liability, indemnification and jurisdiction issues defined therein. Any holder of this document is advised that information contained hereon reflects the Company's findings at the time of its intervention only and within the limits of Client's instructions, if any. The Company's sole responsibility is to its Client and this document does not exonerate parties to a transaction from exercising all their rights and obligations under the transaction documents. This document cannot be reproduced except in full, without prior written approval of the Company. Any unauthorized alteration, forgery or falsification of the content or appearance of this document is unlawful and offenders may be prosecuted to the fullest extent of the law. Unless otherwise stated the results shown in this test report refer only to the sample(s) tested and such sample(s) are retained for 30 days only.  
Attention: To check the authenticity of testing / inspection report & certificate, please contact us at telephones: (86-755) 8307 1443, or email: CN.Doccheck@sgs.com

工厂包装/Carpacks/Industrial Part No.: Shunde South Road (Wuhu Station) Jiangmen, Shunde, Foshan, Guangdong, China 528333 t (86-757)22935888 f (86-757)22936858 www.sgs.com.cn  
中国·广东·佛山市顺德区大良街道办事处长沙路和康路·华发洲工业园一号楼首层 邮编: 528333 t (86-757)22935888 f (86-757)22936858 e sgs.china@sgs.com

Member of the SGS Group (SGS SA)